

ICCONS®

POWER TOOL ACCESSORIES



 **FAST DRIVE**  
INSERT BITS | POWER BITS  
NUT-SETTERS | BIT HOLDERS



**ICCONS® FASTDRIVE QUALITY RANGE  
OF DRIVE BITS, NUT SETTERS &  
ACCESSORIES WILL MAKE YOUR  
FASTENING JOBS EASY!**

Rest Assured, ICCONS® dedication to provide quality products to our independent dealers and end-users continues to evolve with the FAST-DRIVE POWER TOOL ACCESSORY (PTA) range.

The fast drive range compliments the already extensive Power Tool Accessories range of Carbide Drilling, Diamond Cutting / Coring & Power Tools.

ICCONS® have produced simple and easy to identify packaging and displays, while industry standard colour coding assists with easy identification of the correct drive types.

Featuring

- Selection of both Standard & Impact bits
- Bit holders & tools
- Core range of Phillips Drive, Pozi Drive, Hex Drive, Square Drive & Nut-setters.
- Lengths include 25mm / 50mm / 75mm / 100mm / 150mm.

ICCONS® PTA Impact bits also provide a precision fit to help prevent stripping and reduce cam-out, the result is superior fastener installation. It all adds up to a bit that's better by design, resulting in ultimate bit life.

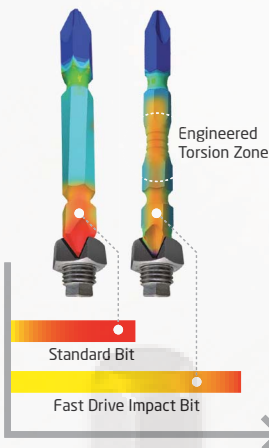


**PTA**  
**POWER TOOL ACCESSORIES**

<b>FAST DRIVE INTRODUCTION</b>	<b>3</b>
<b>BIT HOLDERS</b>	<b>4</b>
<b>ANGLE DRIVE ADAPTER, KITS &amp; BITZ BOX</b>	<b>5</b>
<b>POZI DRIVE IMPACT PHILLIPS - STANDARD BITS</b>	<b>6</b>
<b>PHILLIPS - IMPACT BITS</b>	<b>7</b>
<b>HEX - STANDARD BITS HEX - IMPACT BITS</b>	<b>8</b>
<b>SQUARE - STANDARD BITS SQUARE - IMPACT BITS</b>	<b>9</b>
<b>NUT-SETTER - STANDARD NUT-SETTER - IMPACT</b>	<b>10</b>
<b>NUT-SETTER - PRESSURE FIT COUNTER DISPLAY</b>	<b>11</b>

# FAST DRIVE

IMPACT INSERT & POWER BITS



## WHY CHOOSE ICCONS® IMPACT BITS?...

- Increased hardness specification for reduced wear
- Engineered torsion zone increases bit life up to 10x longer when compared to standard bits.
- High quality black phosphate corrosion resistant coating helps distinguish Impact bits from standard bits
- Industry standard colour coding to identify drive types



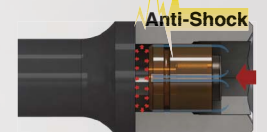
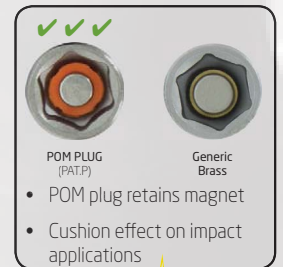
MAGNETIC NUT SETTERS

## ADVANTAGES OF THE ICCONS® IMPACT & IMPACT-RESISTANT MAGNETIC NUT-SETTERS...

- Specially engineered orange POM PLUG (Pat.P) delivers cushion effect on impact applications and absorbs the impact load.
- In order to maximize the strength of the magnet, The POM PLUG (Pat.P) adjusts its position to suit different heights of hex head screws.



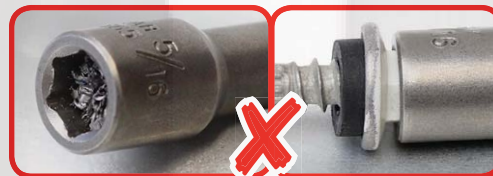
Broken & loss of Magnet can occur on standard Nut Setters without the POM plug, as experienced with some competitor nut-setters



NON-MAGNETIC NUT SETTERS

## ICCONS® PRESSURE FIT NON-MAGNETIC NUT-SETTERS ARE THE WAY TO GO...

- Non - magnetic
- No more wobbly installs from swarf build up
- Pressure fit holds the screw firmly in place via 3 ball bearings & spring clip
- Ideal for Stainless Steel & Carbon Steel fasteners
- Impact Rated
- Great choice for Roofing Screws



PACKAGING

## INNOVATIVE BOX DESIGN.....

ICCONS® delivers again! Each retail box has been designed with a special perforation that allows it to be converted to a handy counter display.

Excludes BTIKIT1 Bit Kit & BTRAQR Angle drive packaging.

All bits are supplied in a compact, sturdy & re-sealable plastic pack which fit perfectly in your ICCONS® Bitz-Box so you can keep all your drive bits in one place.



Tear away Box design for easy merchandising



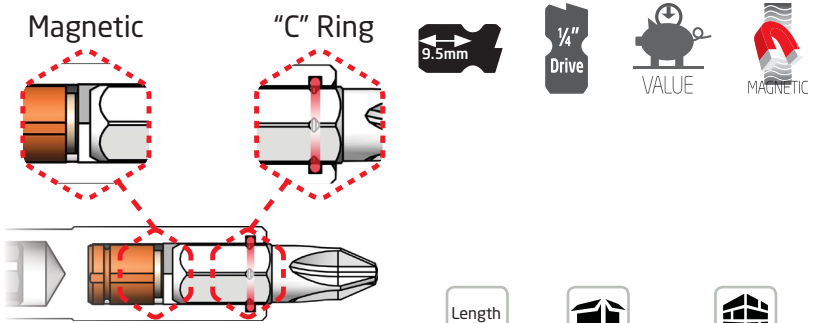
Inner packaging converts to counter display



Hex Drive

Standard

## Bit Holder Standard - Magnetic with "C" Ring

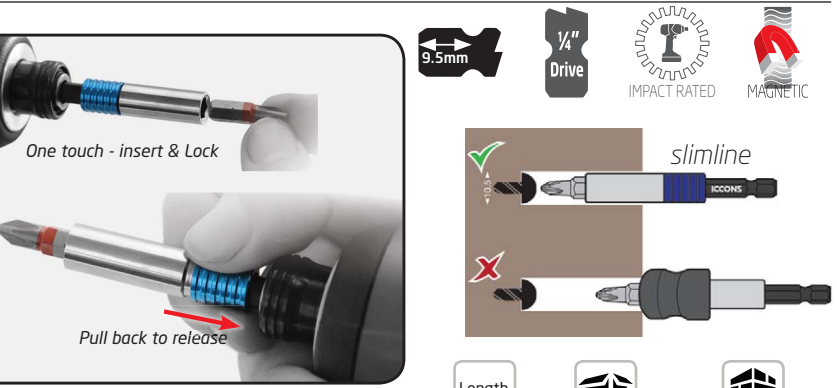


IC Find #	Part No.	Description	Length mm	qty	qty
BS-016	BTSMBHC60	Standard Magnetic Bit Holder With C Ring - 1/4" hex x 60mm	60	3pce/pack	15 packs of 3
BS-018	BTSMBHC75	Standard Magnetic Bit Holder With C Ring - 1/4" hex x 75mm	75	3pce/pack	15 packs of 3

Hex Drive

Impact

## Bit Holder Impact - Magnetic Quick release



IC Find #	Part No.	Description	Length mm	qty	qty
BI-010	BTIQRBH60	Impact Quick Release Magnetic Bit Holder - 1/4" hex x 60mm	60	1pce/pack	15 packs of 1

## Extension Bit Quick release - 600mm

- Quick Release.
- Self-Locking - Eliminating unwanted bit tip releases.
- Suitable for 1/4 inch Power Bits.
- 600mm Length.
- Black phosphate corrosion resistant finish.
- Decking - Use from a standing position to save your back!



IC Find #	Part No.	Description	Length mm	qty / pack	qty
BS-025	BTQRE600	Quick Release Extension Bit - 1/4" hex x 600mm	600	1	10

Not suitable for 25mm insert bits



# FASTDRIVE

## 90° Drill Attachment - Quick release



- 5 Ball Bearing construction.
- Long life 8620 metal gears
- Perfect for difficult to reach screws
- Durable 6061 alloy Body
- Suitable for both Insert & Power Bits



IC Find #	Part No.	Description	Height without bit mm	qty / pack	qty
BI-050	BTRAQR	Right angle drill attachment with quick release bit holder	55	1	10

## Impact Bit Kit 9x Impact bits & 1x bit holder



IC Find #	Part No.	Description	Bit Length mm	qty / pack	qty
BI-030	BTIKIT1	10 Pce 25mm Insert Impact Bit Kit - (3 x Ph2, Sq2, Hx5 + 1x Bit Holder)	25	1	15

## BITZ-BOX Adjustable 7 compartment case



Load up with your Favourite Bits

Part No.	Description	qty
BITZ-BOX	Adjustable 7 Compartment Case 375mm (w) x 255mm(h)	1

# FAST DRIVE

## Pozi Impact - Insert Bits

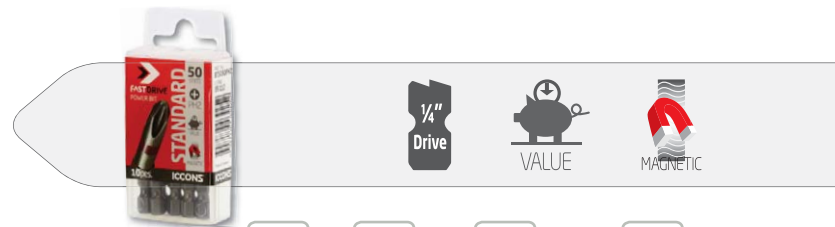
- Black Phosphate corrosion resistant finish
- Engineered torsion zone
- Up to 10x extended bit tip life
- Impact Rated
- Precision Tip reduces cam-out and stripping
- Colour-coded - White for Pozi drive
- Professional Quality - Made to handle high volume users



Pozi Drive		Description	drive type	Length mm	qty	qty
IC Find #	Part No.					
BI-170	BTI050PZ2	Impact Insert Bit - 1/4" x 25mm PZ2	PZ2	25	10pce/pack	15 packs of 10

## Phillips Standard - Insert & Power bits

- Precision Tip reduces cam-out and stripping
- Economical option
- Medium to high usage
- Colour-coded - Red for Phillips drive
- Trade quality - made from high quality S2 steel



Phillips No. 2		Description	drive type	Length mm	qty	qty
IC Find #	Part No.					
BS-110	BTS025PH2	Standard Insert Bit - 1/4" x 25mm PH2	PH2	25	10pce/pack	15 packs of 10
BS-112	BTS050PH2	Standard Power Bit - 1/4" x 50mm PH2	PH2	50	10pce/pack	15 packs of 10
BS-114	BTS075PH2	Standard Power Bit - 1/4" x 75mm PH2	PH2	75	10pce/pack	15 packs of 10
BS-116	BTS100PH2	Standard Power Bit - 1/4" x 100mm PH2	PH2	100	10pce/pack	15 packs of 10
BS-118	BTS150PH2	Standard Power Bit - 1/4" x 150mm PH2	PH2	150	10pce/pack	15 packs of 10

Pozi Drive

Impact

Phillips Drive

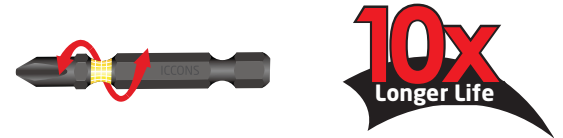
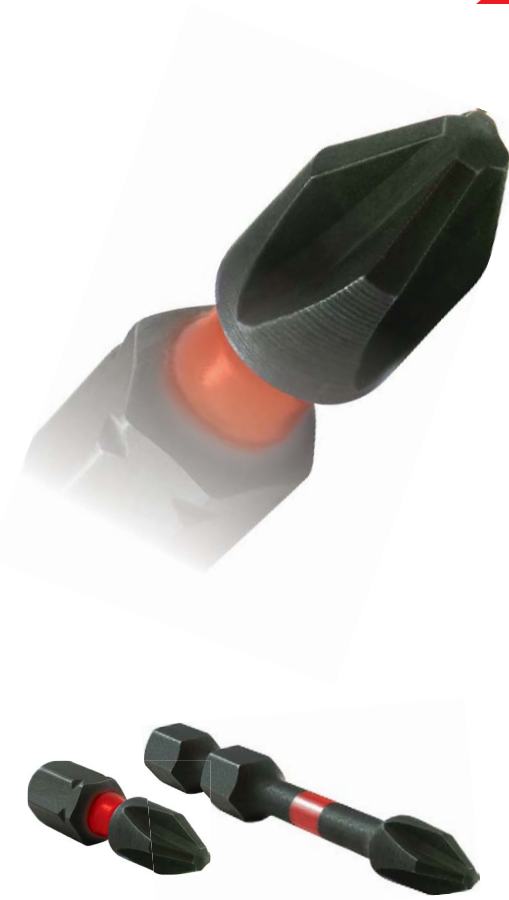
Standard



# FAST DRIVE

## Phillips Impact - Insert & Power bits

- Black Phosphate corrosion resistant finish
- Engineered torsion zone
- Up to 10x extended bit tip life
- Impact Rated
- Precision Tip reduces cam-out and stripping
- Colour-coded - Red for Phillips drive
- Professional Quality - Made to handle high volume users



Phillips No. 2				Length		
IC Find #	Part No.	Description	drive type	mm	qty	qty
BI-110	BTI025PH2	Impact Insert Bit - 1/4" x 25mm PH2	PH2	25	10pce/pack	15 packs of 10
BI-112	BTI050PH2	Impact Power Bit - 1/4" x 50mm PH2	PH2	50	10pce/pack	15 packs of 10
BI-114	BTI075PH2	Impact Power Bit - 1/4" x 75mm PH2	PH2	75	10pce/pack	15 packs of 10
BI-116	BTI100PH2	Impact Power Bit - 1/4" x 100mm PH2	PH2	100	10pce/pack	15 packs of 10
BI-118	BTI150PH2	Impact Power Bit - 1/4" x 150mm PH2	PH2	150	10pce/pack	15 packs of 10



## Phillips Impact - Double ended

Phillips No. 2				Length		
IC Find #	Part No.	Description	drive type	mm	qty	qty
BI-150	BTIDE065PH2	Impact Double Ended Bit - 1/4" x 65mm PH2 x PH2	PH2	65	10pce/pack	15 packs of 10



## Phillips Impact - Insert PH3

Phillips No. 3				Length		
IC Find #	Part No.	Description	drive type	mm	qty	qty
BI-120	BTI025PH3	Impact Insert Bit - 1/4" x 25mm PH3	PH3	25	10pce/pack	15 packs of 10



Hex Drive  
Standard



### HEX Standard - Insert & Power bits

- Precision Tip reduces cam-out and stripping
- Economical option
- Medium to high usage
- Colour-coded - Green for Hex drive
- Trade quality - made from high quality S2 steel



1/4" Drive

VALUE

MAGNETIC

Hex Drive			drive type	Length mm	qty	qty
IC Find #	Part No.	Description				
BS-420	BTS025HX5	Standard Insert Bit - 1/4" x 25mm HX5	HX5	25	10pce/pack	15 packs of 10
BS-422	BTS050HX5	Standard Power Bit - 1/4" x 50mm HX5	HX5	50	10pce/pack	15 packs of 10

Hex Drive  
Impact



### Hex Impact - Insert & Power bits

- Black Phosphate corrosion resistant finish
- Engineered torsion zone
- Up to 10x extended bit tip life
- Impact Rated
- Precision Tip reduces cam-out and stripping
- Colour-coded - Green for Hex drive
- Professional Quality - Made to handle high volume users



1/4" Drive

IMPACT RATED

TORSION

MAGNETIC

Hex Drive			drive type	Length mm	qty	qty
IC Find #	Part No.	Description				
BI-420	BTI025HX5	Impact Insert Bit - 1/4" x 25mm HX5	HX5	25	10pce/pack	15 packs of 10
BI-422	BTI050HX5	Impact Power Bit - 1/4" x 50mm HX5	HX5	50	10pce/pack	15 packs of 10



### Hex Impact - Double ended

Hex Drive			drive type	Length mm	qty	qty
IC Find #	Part No.	Description				
BI-450	BTIDE065HX5	Impact Double Ended - 1/4" x 65mm HX5 x HX5	PH2	65	10pce/pack	15 packs of 10





# FAST DRIVE

## Square Standard - Insert & Power bits

- Precision Tip reduces cam-out and stripping
- Economical option
- Medium to high usage
- Colour-coded - Blue for Square drive
- Trade quality - made from high quality S2 steel



Square Drive				Length		
IC Find #	Part No.	Description	drive type	mm	qty	qty
BS-310	BTS025SQ2	Standard Insert Bit - 1/4" x 25mm SQ2	SQ2	25	10pce/pack	15 packs of 10
BS-312	BTS050SQ2	Standard Power Bit - 1/4" x 50mm SQ2	SQ2	50	10pce/pack	15 packs of 10

## Square Impact - Insert & Power bits

- Black Phosphate corrosion resistant finish
- Engineered torsion zone
- Up to 10x extended bit tip life
- Impact Rated
- Precision Tip reduces cam-out and stripping
- Colour-coded - Blue for Square drive
- Professional Quality - Made to handle high volume users



Square Drive				Length		
IC Find #	Part No.	Description	drive type	mm	qty	qty
BI-310	BTI025SQ2	Impact Insert Bit - 1/4" x 25mm SQ2	SQ2	25	10pce/pack	15 packs of 10
BI-312	BTI050SQ2	Impact Power Bit - 1/4" x 50mm SQ2	SQ2	50	10pce/pack	15 packs of 10
BI-316	BTI100SQ2	Impact Power Bit - 1/4" x 100mm SQ2	SQ2	100	10pce/pack	15 packs of 10

## Square Impact - Double ended



Square Drive				Length		
IC Find #	Part No.	Description	drive type	mm	qty	qty
BI-350	BTIDE065SQ2	Impact Double Ended - 1/4" x 65mm SQ2 x SQ2	SQ2	65	10pce/pack	15 packs of 10

Standard

Square Drive

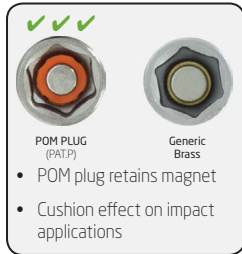
Impact

Square Drive



Nut-Setter

Standard



### Nut-Setter Standard - 1/4", 5/16" & 3/8"

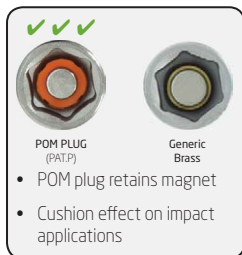
- Trade quality - made from high quality S2 steel
- Economical option
- Impact Resisting
- Medium to high usage
- Magnet retained with POM Plug (patent pending)



Nut-Setter			Length	Qty	Qty	
IC Find #	Part No.	Description	internal	mm	qty	qty
BS-510	BTS065NS14	Standard Nut Setter- 1/4" x 65mm 1/4"	1/4"	65	3	15
BS-512	BTS065NS516	Standard Nut Setter- 1/4" x 65mm 5/16"	5/16"	65	3	15
BS-522	BTS150NS516	Standard Nut Setter- 1/4" x 150mm 5/16"	5/16"	150	3	15
BS-514	BTS065NS38	Standard Nut Setter- 1/4" x 65mm 3/8"	3/8"	65	3	15

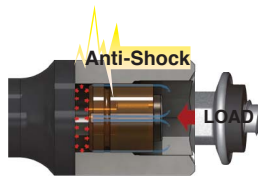
Nut-Setter

Impact



### Nut-Setter Impact - 1/4", 5/16" & 3/8"

- Black Phosphate corrosion resistant finish
- Up to 10x extended life
- Impact Rated
- Anti-shock magnet for high-impact environments
- Colour Coded — Red - 1/4", Yellow - 5/16" & Blue - 3/8".
- Professional Quality - Made to handle high volume users



Nut-Setter			Length	Qty	Qty	
IC Find #	Part No.	Description	internal	mm	qty	qty
BI-510	BTI065NS14	Impact Nut Setter- 1/4" x 65mm 1/4"	1/4"	65	3	15
BI-512	BTI065NS516	Impact Nut Setter- 1/4" x 65mm 5/16"	5/16"	65	3	15
BI-522	BTI150NS516	Impact Nut Setter- 1/4" x 150mm 5/16"	5/16"	150	3	15
BI-514	BTI065NS38	Impact Nut Setter- 1/4" x 65mm 3/8"	3/8"	65	3	15



# FAST DRIVE

## Nut-Setter Impact - Pressure Fit



- Non - magnetic
- No more wobbly installs from swarf build up
- Pressure fit holds the screw firmly in place via 3 ball bearings & spring clip
- Ideal for Stainless Steel & Carbon Steel fasteners
- Impact Rated
- Great choice for Roofing Screws



Length



Nut-Setter for SS Screws			internal	mm	qty	qty
IC Find #	Part No.	Description				
BI-562	BTI065SSNS516	Impact Nut Setter- 1/4" x 65mm 5/16"	5/16"	65	3	15
BI-564	BTI065SSNS38	Impact Nut Setter- 1/4" x 65mm 5/16"	3/8"	65	3	15



## Counter Display Unit Rotating 3 face

- Suitable for counter top display
- 1040mm(h) x 580mm(w) x 510mm(D) (unit only)
- Can hold up to 720 sku's (depends on stock selected)
- 360° Rotation
- 3 faces for stock
- Adjustable pegs



Part No.	Description	
YDSBTCU	Counter display Unit	1

## ICCONS® PTY LTD

VICTORIA - HEAD OFFICE  
12-18 Produce Drive, Dandenong South,  
Victoria, 3175  
P: **03 9706 4344**  
F: **03 9768 3329**  
E: [sales@iccons.com.au](mailto:sales@iccons.com.au)

NSW Branch  
Unit A, 17 Seddon Street, Bankstown,  
New South Wales, 2200  
P: **02 9791 6869**  
F: **02 9790 8404**  
E: [salesnsw@iccons.com.au](mailto:salesnsw@iccons.com.au)

QLD Branch  
42-44 Nealdon Drive, Meadowbrook,  
Queensland, 4131  
P: **07 3200 6455**  
F: **07 3299 7548**  
E: [salesqld@iccons.com.au](mailto:salesqld@iccons.com.au)

S.A Branch  
29-31 Weaver St, Edwardstown,  
South Australia, 5039  
P: **08 8234 5535**  
F: **08 8354 4689**  
E: [salessa@iccons.com.au](mailto:salessa@iccons.com.au)

W.A. Branch  
90 Christable Way, Landsdale,  
Western Australia, 6065  
P: **08 6305 0008**  
F: **08 6305 0011**  
E: [saleswa@iccons.com.au](mailto:saleswa@iccons.com.au)

NORTHERN TERRITORY  
Unit 1, 14 Menmuir Street, Winnellie,  
Northern Territory 0820  
P: **08 8947 2758**  
F: **08 8947 2758**  
E: [salesnt@iccons.com.au](mailto:salesnt@iccons.com.au)

NEW ZEALAND  
Sesto Fasteners  
5E Piermark Drive, Albany, Auckland,  
New Zealand 0630  
P: **+64 027 526 6403**  
E: [sestofasteners@gmail.com](mailto:sestofasteners@gmail.com)

ICCONS (Thailand) Co. Ltd.  
55 Phetkasem 62/3, Bangkhuae,  
Bangkok 0160  
P: **+ 66 2 801 0764**  
F: **+ 66 2 801 0764**  
M: **+ 66 8 1 710 8745**  
E: [icconsthailand@hotmail.com](mailto:icconsthailand@hotmail.com)

ON-SITE EVERYDAY

